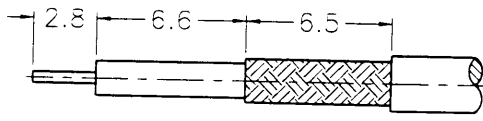
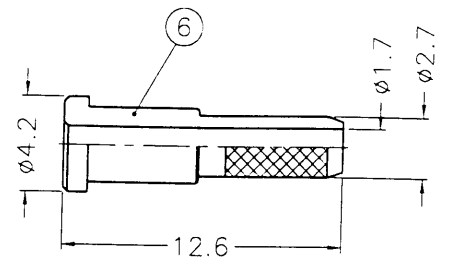
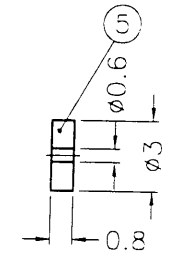
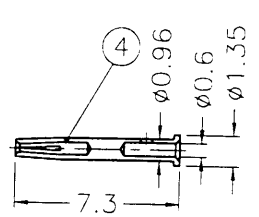
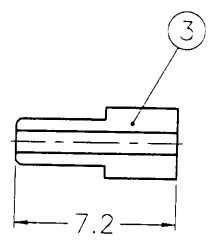
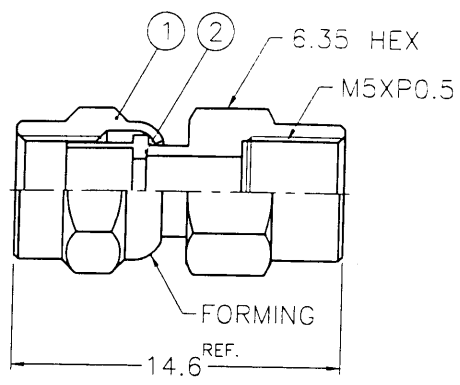


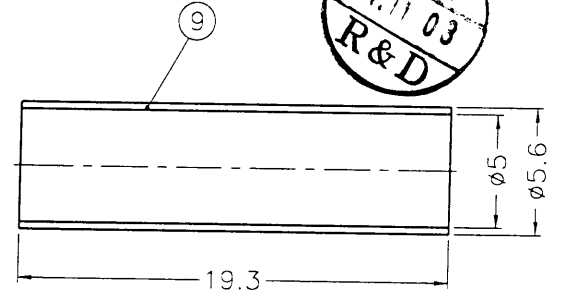
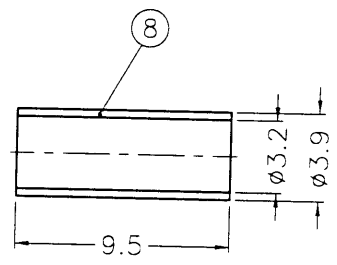
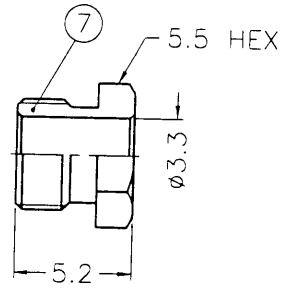
REVISIONS			
ISS	ZONE	DESCRIPTION	APPROVED \ DATE



RECOMMENDED
CABLE STRIPPING DIM'S



- NOTES: FINISH (PLATING THICKNESS IN MICRO-INCHES)
1. BRASS PER QQ-B-626
 2. GOLD PL. 3 MIN. THICK OVER NICKEL PL. 100 MIN. THICK OVER COPPER STRIKE
 3. BERYLLIUM COPPER PER QQ-C-530
 4. GOLD PL. 30 MIN. THICK OVER NICKEL PL. 100 MIN. THICK OVER COPPER STRIKE
 5. TEFLON MIL-P-19468
 6. JIS H 3250, C 2700



9	HEAT SHRINK TUBING			1	HT-56/5X193
8	FERRULE	NOTE 6	NOTE 2	1	FR-39/32X95
7	HEX NUT	NOTE 1	NOTE 2	1	SMB5003-7-55/33
6	BARREL	NOTE 1	NOTE 2	1	SMB5003-6-27/17
5	INSULATOR	NOTE 5	NATURAL	1	SMB5003-5
4	CONTACT PIN	NOTE 3	NOTE 4	1	SMB5003-4-135/06-B
3	INSULATOR	NOTE 5	NATURAL	1	SMB5003-3T-50
2	BODY	NOTE 1	NOTE 2	1	SMC6121G1-2
1	SHELL	NOTE 1	NOTE 2	1	SMC6121A1-1

DIMENSIONS ARE IN MILLIMETERS			PART NO.	
UNLESS OTHERWISE SPECIFIED TOLERANCES			APPROVED	DATE
0.5-6	= ±0.2		<i>Mark C</i>	10-29-98'
6-30	= ±0.4			
30-120	= ±0.6		CHECKED	DATE
120-315	= ±1		<i>Mark C</i>	10-29-98'
315-1000	= ±1.6			
1000-2000	= ±2.4		DRAWN	DATE
			<i>alex.H</i>	10-29-98'

KAI JACK INDUSTRIAL CO., LTD.
TAINAN TAIWAN R.O.C.

TITLE: SMC CRIMP PLUG (FOR RG-174/U, 188A/U, 316/U)

DRAWING NO. KJ-SMC6121G1-3GT30G-316U-50

FILE NO. F:\DWG\SMC\6121G1\316-50\3GT30G

F
E
D
C
B
A