

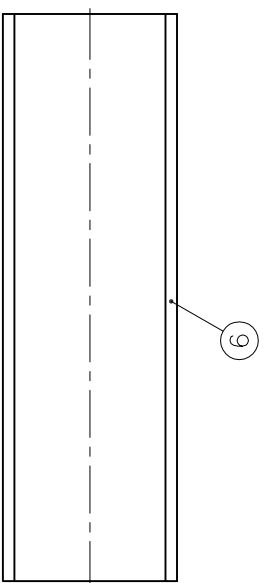
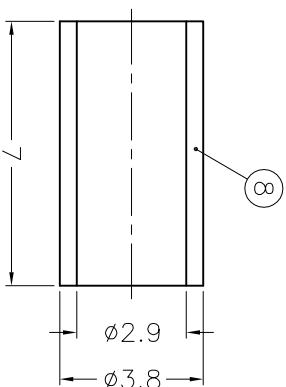
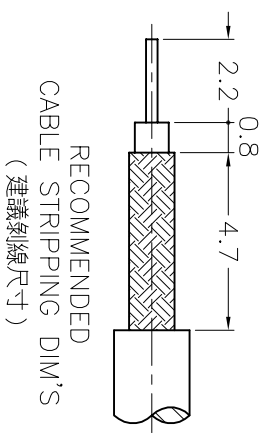
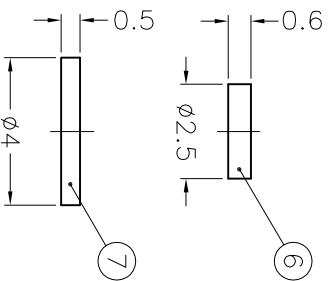
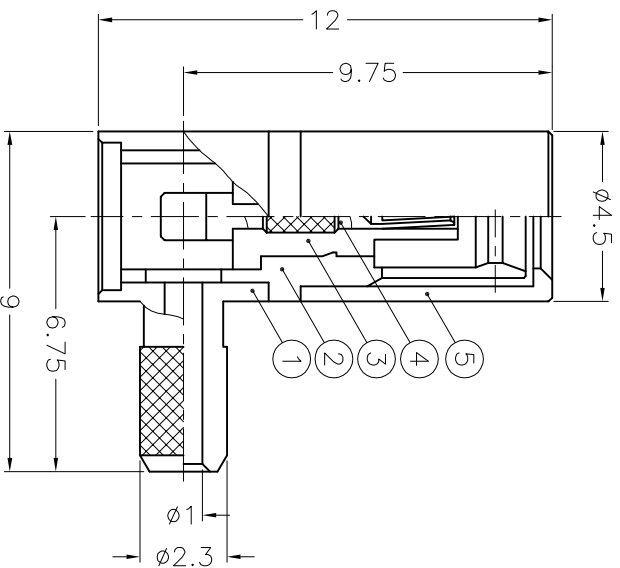
REVISIONS	
ISS	DESCRIPTION\PER REQUEST\DATE
A1	B-1 NO.7 WAS CHANGED\N/A\06-29-01'
	D-7
B	NO.4 WAS CHANGED AND ADDED NO.6\RD-DM92012702L \01-27-03'

1. CRIMPED FERRULE
HEX CRIMP SIZE .128"
2. CONTACT PIN TO SOLDER

NOTES: FINISH (PLATING THICKNESS IN MICRO-INCHES)

1. BRASS PER QQ-B-626
2. BRASS PER QQ-B-613
3. BERYLLIUM COPPER PER QQ-C-530
4. GOLD PL. 3 MIN. THICK OVER NICKEL PL. 100 MIN. THICK OVER COPPER STRIKE
5. GOLD PL. 30 MIN. THICK OVER NICKEL PL. 100 MIN. THICK OVER COPPER STRIKE
6. TEFLON MIL-P-19468

9	HEAT SHRINK TUBING			1	HT-46/4X15			
8	FERRULE	COPPER	NOTE 4	1	FR-38/29X7C			
7	COVER	NOTE 2	NOTE 4	1	CV-4X05-T			
6	INSULATOR	NOTE 6	NATURAL	1	NS00AWW01A			
5	SHELL	NOTE 1	NOTE 4	1	SSMB-SHELL-1			
4	CONTACT PIN	NOTE 3	NOTE 5	1	SSMB612A1-4-B			
3	INSULATOR	NOTE 6	NATURAL	1	SSMB612A1-3			
2	BODY	NOTE 3	NOTE 4	1	SSMB612A1-2			
1	HOUSING	NOTE 1	NOTE 4	1	SSMB112A1-1			



DIMENSIONS ARE IN MILLIMETERS
UNLESS OTHERWISE SPECIFIED
TOLERANCES

0.5-6 = ±0.2
6-30 = ±0.4
30-120 = ±0.6
120-315 = ±1
315-1000 = ±1.6
1000-2000 = ±2.4

PART NO.		DATE	
APPROVED		01-27-03'	
CHECKED		01-27-03'	
DRAWN		01-27-03'	

Amphenol
Danbury, CT, USA - Taichung, Taiwan - Shenzhen, China

TITLE
SSMB R/A CRIMP PLUG
(FOR RG-178B/U, 196A/U)

DRAWING NO.
SSMB612A1-3GT30G-196AU-50

ITEM NO.
156112AAA16GE5F

1 2 3 4 5 6 7 8