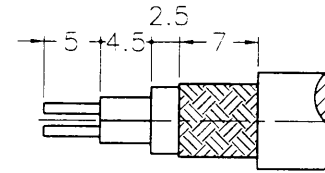
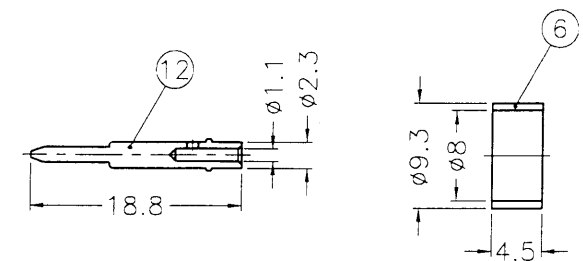
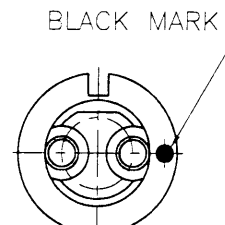
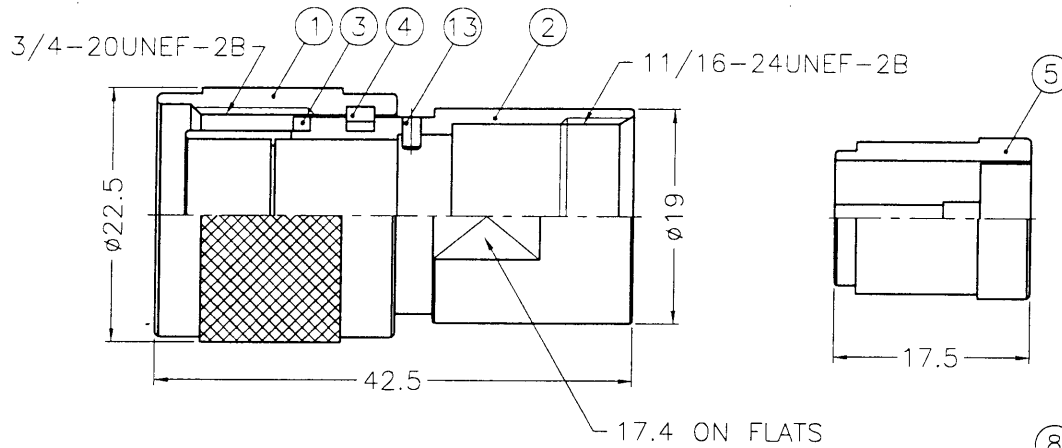


REVISIONS			
ISS	ZONE	DESCRIPTION\APPROVED\DATE	
A	A-7	TWX1141K1 WAS TW5622 \TONY. T \09-07-93'	
B	A-1	NO.6 WAS CHANGED \TCNY. T \04-26-94'	
C	A-1	NO.4 WAS CHANGED \TCNY. T \11-01-94'	
D	A-1	DRAWING NO. WERE CHANGED ON NO.3, NO.9, NO.10, B-1 NO.11 AND NO.12\TONY. T\09-23-96'	
E	A-1	NO.4 WAS CHANGED\TONY. T\06-15-98'	

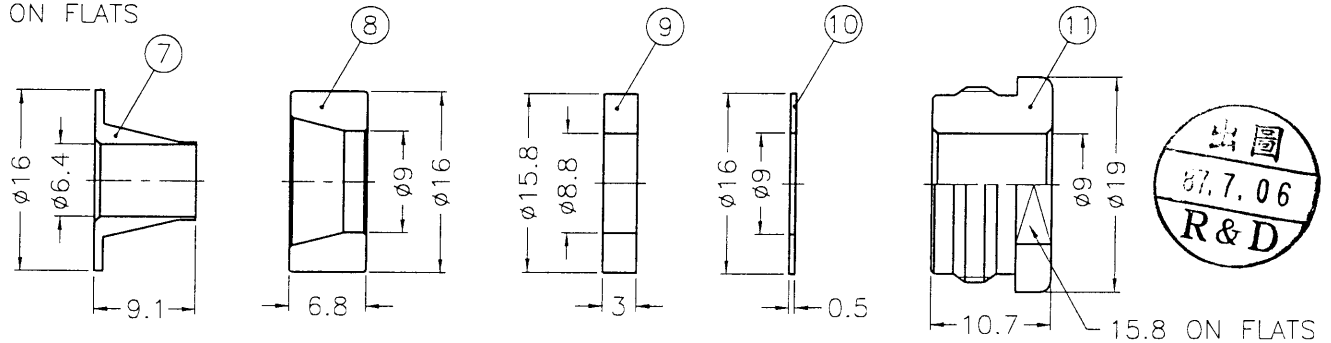
業務部



RECOMMENDED
CABLE STRIPPING DIM'S



NOTES: 1. PER KAI JACK SPEC. EP-SS-9700
2. BRASS PER QQ-B-626
3. BRASS PER QQ-B-613



出圖
87.7.06
R&D

13	PIN	NOTE 2	NOTE 1	1	TW5620-12
12	CONTACT PIN	NOTE 2	NOTE 1	2	TW5622-12-23/ 11
11	NUT	NOTE 2	NOTE 1	1	TW5622-11-19/9
10	WASHER	NOTE 3	NOTE 1	1	WS-16/9X05
9	GASKET	SILICONE	RED	1	GS-158/88X3
8	COMPRESSOR	NOTE 2	NOTE 1	1	TW5622-8
7	BRAID CLAMP	NOTE 2	NOTE 1	1	TW5622-7
6	RING	DELTRIN	NATURAL	1	TW5621-6
5	INSULATOR	PBT	WHITE	1	TW5622-5
4	RETAINER RING	SUS 304	NATURAL	1	N5000-7-C
3	GASKET	SILICONE	RED	1	GS-17/145X15
2	BODY	NOTE 2	NOTE 1	1	TW5622-2
1	SHELL	NOTE 2	NOTE 1	1	TW5620-1
NO.	DESCRIPTION	MATERIAL	FINISH	Q'TY	DRAWING NO.

DIMENSIONS ARE IN MILLIMETERS
UNLESS OTHERWISE SPECIFIED
TOLERANCES
0.5-6 = ±0.2
6-30 = ±0.4
30-120 = ±0.6
120-315 = ±1
315-1000 = ±1.6
1000-2000 = ±2.4

PART NO.

APPROVED

CHECKED

DRAWN

DATE 07-01-98'

DATE 07-01-98'

DATE 07-01-98'



KAI JACK INDUSTRIAL CO., LTD.
TAINAN TAIWAN R.O.C.

TITLE

TWINAXIAL CLAMP PLUG

DRAWING NO.

KJ-TWX1141K1-95

FILE NO.

F:\DWG\TWX\1141K1\95