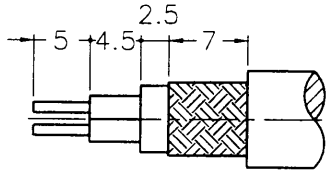
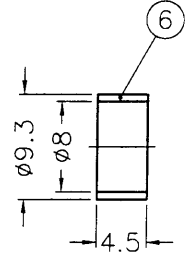
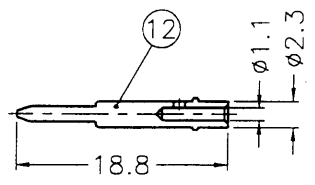
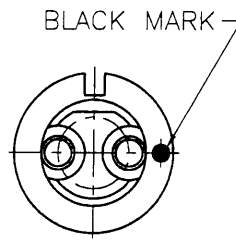
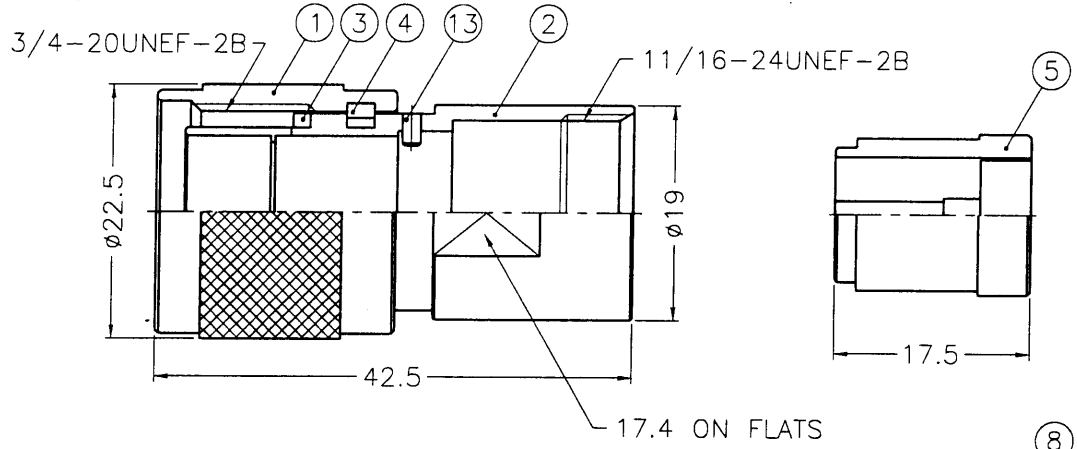


REVISIONS				
ISS	ZONE	DESCRIPTION	APPROVED	DATE
A	A-7	TWX1141K1 WAS TW5622	TONY. T	09-07-93'
B	A-1	NO.6 WAS CHANGED	TONY. T	04-26-94'
C	A-1	NO.4 WAS CHANGED	TONY. T	11-01-94'
D	A-1	DRAWING NO. WERE CHANGED ON NO.3, NO.9, NO.10,		
	B-1	NO.11 AND NO.12	TONY. T	09-23-96'
E	A-1	NO.4 WAS CHANGED	TONY. T	06-15-98'

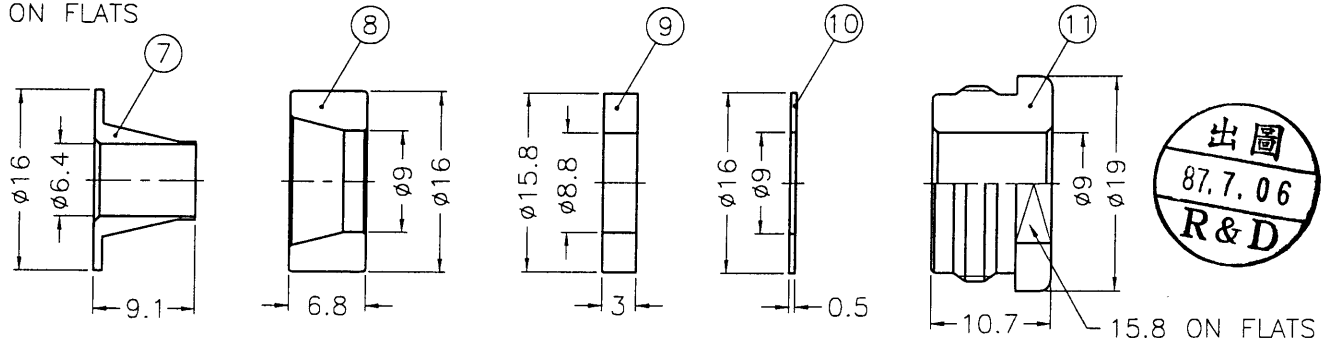
業務部



RECOMMENDED CABLE STRIPPING DIM'S



NOTES: 1. PER KAI JACK SPEC. EP-SS-9700
 2. BRASS PER QQ-B-626
 3. BRASS PER QQ-B-613



出圖
87.7.06
R&D

NO.	DESCRIPTION	MATERIAL	FINISH	Q'TY	DRAWING NO.
13	PIN	NOTE 2	NOTE 1	1	TW5620-12
12	CONTACT PIN	NOTE 2	NOTE 1	2	TW5622-12-23/11
11	NUT	NOTE 2	NOTE 1	1	TW5622-11-19/9
10	WASHER	NOTE 3	NOTE 1	1	WS-16/9X05
9	GASKET	SILICONE	RED	1	GS-158/88X3
8	COMPRESSOR	NOTE 2	NOTE 1	1	TW5622-8
7	BRAID CLAMP	NOTE 2	NOTE 1	1	TW5622-7
6	RING	DELTRIN	NATURAL	1	TW5621-6
5	INSULATOR	PBT	WHITE	1	TW5622-5
4	RETAINER RING	SUS 304	NATURAL	1	N5000-7-C
3	GASKET	SILICONE	RED	1	GS-17/145X15
2	BODY	NOTE 2	NOTE 1	1	TW5622-2
1	SHELL	NOTE 2	NOTE 1	1	TW5620-1

DIMENSIONS ARE IN MILLIMETERS
 UNLESS OTHERWISE SPECIFIED TOLERANCES
 0.5-6 = ±0.2
 6-30 = ±0.4
 30-120 = ±0.6
 120-315 = ±1
 315-1000 = ±1.6
 1000-2000 = ±2.4

PART NO.	
APPROVED	Mark. C DATE 07-01-98'
CHECKED	Mark. C DATE 07-01-98'
DRAWN	alex.H DATE 07-01-98'

<p>KAI JACK INDUSTRIAL CO., LTD. TAINAN TAIWAN R.O.C.</p>	TITLE	TWINAXIAL CLAMP PLUG
	DRAWING NO.	KJ-TWX1141K1-95
	FILE NO.	F:\DWG\TWX\1141K1\95