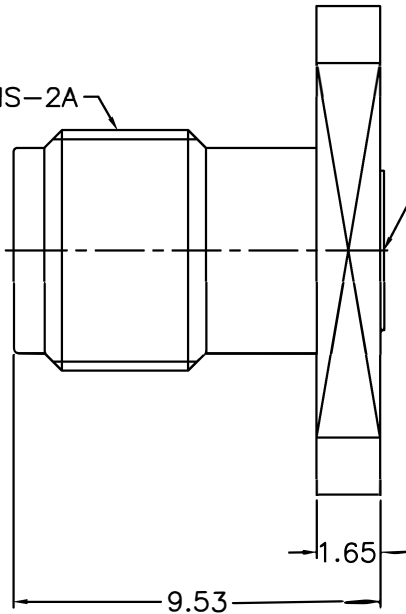
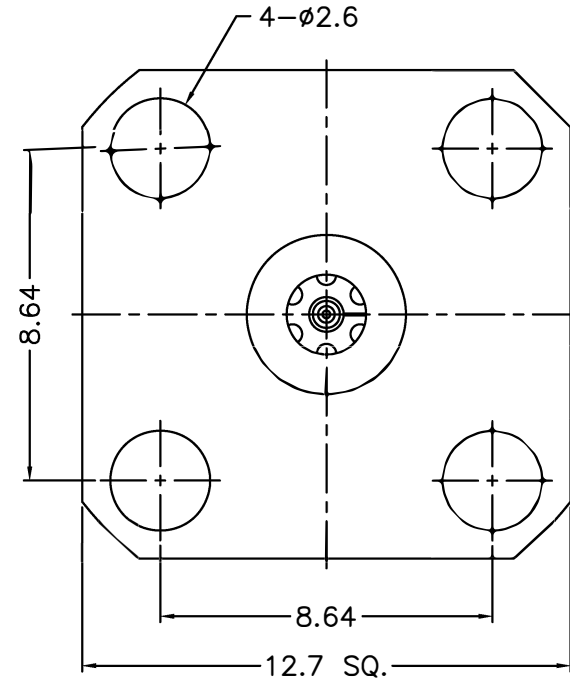


1	2		3	4	5	6	7	8
REVISIONS								
ISS	ZONE	DESCRIPTION\PER REQUEST\DATE						

1/4-36UNS-2A



ACCEPTS $\phi.012$ "
CENTER CONDUCTOR
(允許 $\phi.012$ " 的中心導針)



NOTES: FINISH (PLATING THICKNESS IN MICRO-INCHES)

1. STAINLESS STEEL
2. PASSIVATED
3. BERYLLIUM COPPER
4. GOLD PL. 10 MIN. THICK OVER NICKEL PL. 50 MIN. THICK OVER COPPER PL. 50 MIN. THICK

RoHS COMPLIANT

						DIMENSIONS ARE IN MILLIMETERS				PART NO.					
						UNLESS OTHERWISE SPECIFIED TOLERANCES				APPROVED			DATE		
						0.5-6 = ± 0.2							TITLE		
						6-30 = ± 0.4							2.92mm PANEL RECEPT. JACK		
						30-120 = ± 0.6				CHECKED			DATE		
						120-315 = ± 1							DRAWING NO.		
						315-1000 = ± 1.6				DRAWN			DATE		
						1000-2000 = ± 2.4							292-6551K1-.012-50		
						SCALE 5/1 ISSUE A							FILE NO. R:\D\G\DWG\292\6551K1\012\50		

4	RING	NOTE 1	NOTE 2	1	292-6551K1-4
3	CONTACT PIN	NOTE 3	NOTE 4	1	292-6551K1-3
2	INSULATOR	ULTEM 1000	NATURAL	1	292-6551K1-2 -50U
1	BODY	NOTE 1	NOTE 2	1	292-6551K1-1
NO.	DESCRIPTION	MATERIAL	FINISH	Q'TY	DRAWING NO.

1 2 3 4 5 6 7 8

F

F

E

E

D

D

C

C

B

B

A

A