

1 2 3 4 5 6 7 8

REVISIONS		
ISS	ZONE	DESCRIPTION\PER REQUEST\DATE

F

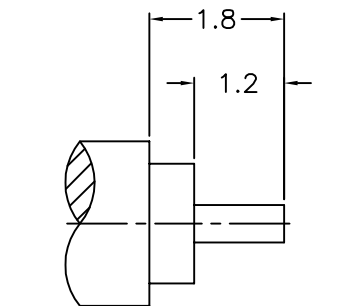
E

D

C

B

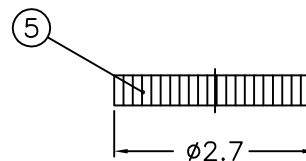
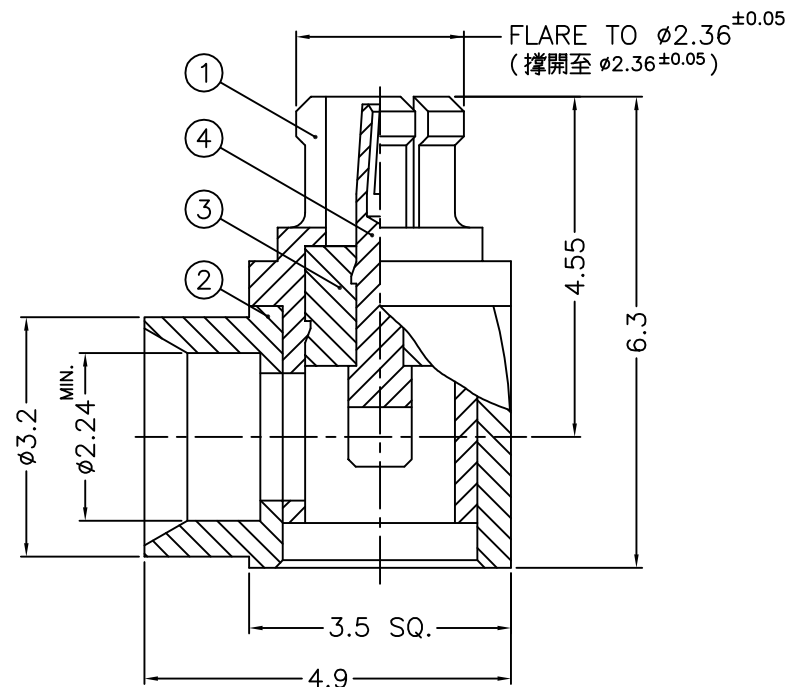
A



RECOMMENDED  
CABLE STRIPPING DIM'S  
(建議剝線尺寸)

NOTES: FINISH (PLATING THICKNESS IN MICRO-INCHES)

1. BRASS
2. GOLD PL. 3 MIN. THICK OVER NICKEL PL. 50 MIN. THICK OVER COPPER PL. 50 MIN. THICK
3. BERYLLIUM COPPER
4. GOLD PL. 30 MIN. THICK OVER NICKEL PL. 50 MIN. THICK OVER COPPER PL. 50 MIN. THICK
5. TEFLON



RoHS COMPLIANT

DIMENSIONS ARE IN MILLIMETERS						PART NO.			TITLE MINI-SMP R/A DIRECT SOLDER PLUG (FOR .085", .086", RG-405/U)	
UNLESS OTHERWISE SPECIFIED TOLERANCES						APPROVED				DRAWING NO. SPC-6182A1-28-50
0.5-6 = ±0.2						DATE				
6-30 = ±0.4						03-17-'15				
30-120 = ±0.6						CHECKED			FILE NO. R:\D\G\DWG\SPC\6182A1\28\50-1	
120-315 = ±1						DATE				
315-1000 = ±1.6						DRAWN				
1000-2000 = ±2.4						ANGELA				
1000-2000 = ±2.4						DATE				
1000-2000 = ±2.4						03-17-'15				
5	COVER	NOTE 1	NOTE 2	1	CV-27-04					
4	CONTACT PIN	NOTE 3	NOTE 4	1	SPC-6182A1-4 -0.6					
3	INSULATOR	NOTE 5	NATURAL	1	SPC-6182A1-3 -50T					
2	HOUSING	NOTE 1	NOTE 2	1	SPC-6182A1-1					
1	BODY	NOTE 3	NOTE 2	1	-28					
NO.	DESCRIPTION	MATERIAL	FINISH	Q'TY	DRAWING NO.	SCALE	10/1	ISSUE	A	

1 2 3 4 5 6 7 8