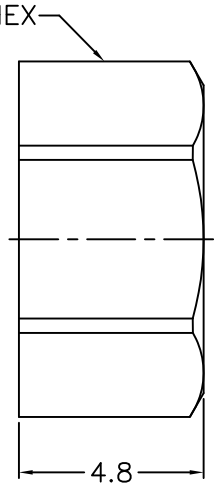
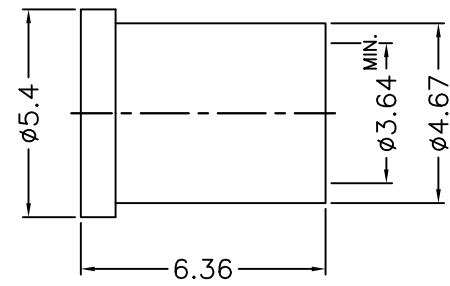
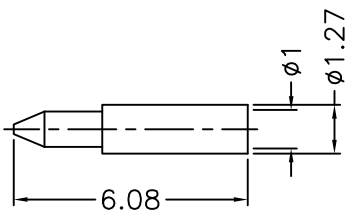
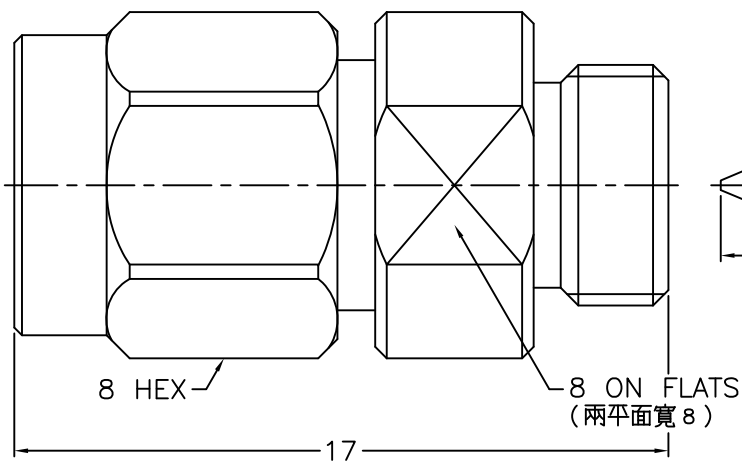


REVISIONS		
ISS	ZONE	DESCRIPTION\PER REQUEST\DATE



- NOTES: FINISH (PLATING THICKNESS IN MICRO-INCHES)
1. BRASS
 2. BERYLLIUM COPPER
 3. GOLD PL. 3 MIN. THICK OVER NICKEL PL. 50 MIN. THICK OVER COPPER PL. 50 MIN. THICK
 4. GOLD PL. 10 MIN. THICK OVER NICKEL PL. 50 MIN. THICK OVER COPPER PL. 50 MIN. THICK
 5. STAINLESS STEEL
 6. PASSIVATED
 7. ULTEM 1000

9	NUT	NOTE 5	NOTE 6	1	292-1181S1-9
8	BRAID HOLDER	NOTE 1	NOTE 3	1	292-1181S1-8-29
7	CONTACT PIN	NOTE 1	NOTE 3	1	PIN-10-127-608
6	SHELL	NOTE 5	NOTE 6	1	1436-1000-1S
5	RETAINER RING	SUS 304	NOTE 6	1	1436-1000-4
4	RING	NOTE 5	NOTE 6	1	292-1181S3-4
3	INSULATOR	NOTE 7	NATURAL	1	292-1181S3-3-50U
2	CONTACT PIN	NOTE 2	NOTE 4	1	292-1181S3-2
1	BODY	NOTE 5	NOTE 6	1	292-1181S3-1
NO.	DESCRIPTION	MATERIAL	FINISH	Q'TY	DRAWING NO.

DIMENSIONS ARE IN MILLIMETERS
UNLESS OTHERWISE SPECIFIED TOLERANCES
0.5-6 = ±0.2
6-30 = ±0.4
30-120 = ±0.6
120-315 = ±1
315-1000 = ±1.6
1000-2000 = ±2.4

PART NO.	
APPROVED	DATE 03-28-'19
CHECKED	DATE 03-28-'19
DRAWN ALAN	DATE 03-28-'19

TITLE 2.92mm DIRECT SOLDER PLUG (FOR .141, RG-402/U CABLE)	
DRAWING NO. 292-1181S1-29-50	
FILE NO. R:\DX\G\DWG\292\1181S1\29\50	

RoHS COMPLIANT