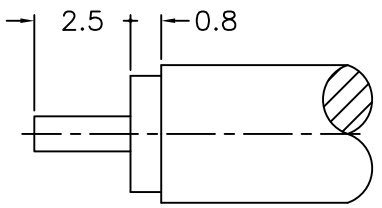
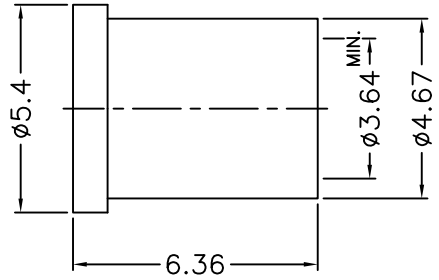
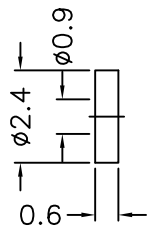
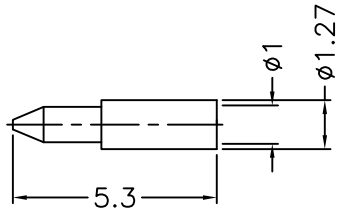
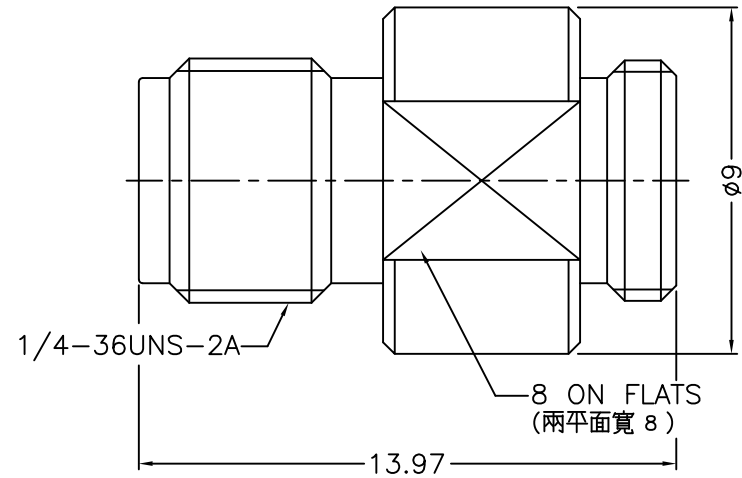
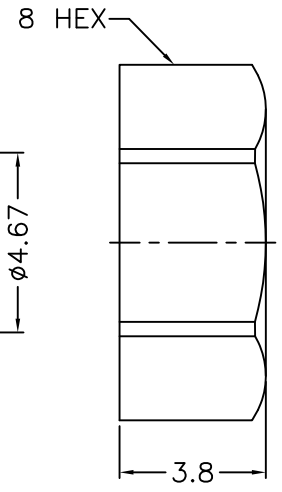


REVISIONS		
ISS	ZONE	DESCRIPTION\PER REQUEST\DATE



RECOMMENDED  
CABLE STRIPPING DIM'S  
(建議剝線尺寸)



- NOTES: FINISH (PLATING THICKNESS IN MICRO-INCHES)
- BRASS
  - BERYLLIUM COPPER
  - GOLD PL. 3 MIN. THICK OVER NICKEL PL. 50 MIN. THICK OVER COPPER PL. 50 MIN. THICK
  - GOLD PL. 10 MIN. THICK OVER NICKEL PL. 50 MIN. THICK OVER COPPER PL. 50 MIN. THICK
  - STAINLESS STEEL
  - PASSIVATED
  - TEFLON
  - ULTEM 1000

8	NUT	NOTE 5	NOTE 6	1	292-6181S2-8
7	BRAID HOLDER	NOTE 1	NOTE 3	1	292-6181S2-7-29
6	INSULATOR	NOTE 7	NATURAL	1	292-1181SA1-9T-0.9
5	CONTACT PIN	NOTE 1	NOTE 3	1	PIN-10-127-53
4	RING	NOTE 5	NOTE 6	1	292-6181S2-4
3	INSULATOR	NOTE 8	NATURAL	1	292-6551K3-2-50U
2	CONTACT PIN	NOTE 2	NOTE 4	1	292-6181S2-2
1	BODY	NOTE 5	NOTE 6	1	292-6181S2-1
NO.	DESCRIPTION	MATERIAL	FINISH	Q'TY	DRAWING NO.

RoHS COMPLIANT

DIMENSIONS ARE IN MILLIMETERS				PART NO.		TITLE 2.92mm DIRECT SOLDER JACK (FOR .141, RG-402/U CABLE)
UNLESS OTHERWISE SPECIFIED TOLERANCES				APPROVED	DATE	
0.5-6 = ±0.2					11-15-'18	
6-30 = ±0.4				CHECKED	DATE	
30-120 = ±0.6					11-15-'18	DRAWING NO.
120-315 = ±1				DRAWN	DATE	292-6181S2-29-50
315-1000 = ±1.6					11-15-'18	FILE NO. R:\D\G\DWG\292\6181S2\29\50
1000-2000 = ±2.4						
SCALE	5/1	ISSUE	A			