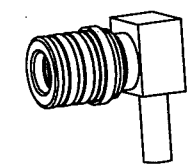
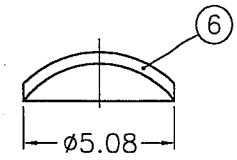
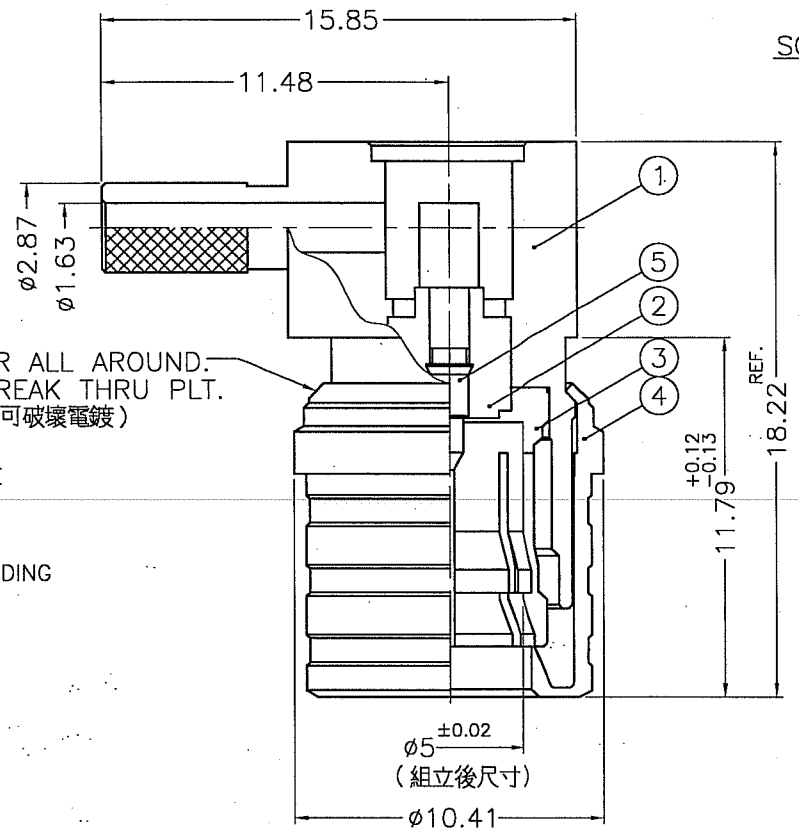
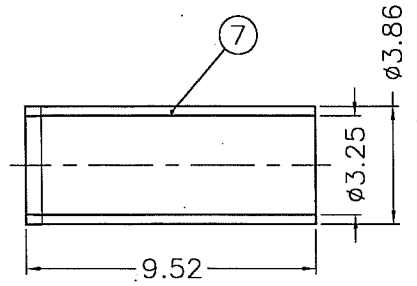


1 2 3 4 5 6 7 8

REVISIONS		
ISS	ZONE	DESCRIPTION\PER REQUEST\DATE
A1	D-4	Ø2.87 WAS Ø2.94 \N/A\07-26-04'
B	A-3	NO.3 WAS CHANGED\RD-DM06072801C\08-14-06'
C	A-3	NO.4 WAS CHANGED\RD-DM06121501J\12-19-06'
D	A-3	NO.4 WAS CHANGED\RD-DM07060601K\06-16-07'



SCALE 1/1



- REMARK: 1. NO.5 IS A PRESS FIT INTO FRONT NO.2 AND MUST MEET INTERFACE DIMENSION AS SHOWN. SLOT SHOULD BE ORIENTED TO SIDE HOLE AS SHOWN ±2'
(NO.5 組入 NO.2 後, 須符合圖面所示尺寸, 且 NO.5 的剖溝與主體側孔中心線平行 ±2' 以內)
2. NO.4 MUST BE FREE TURNING AND MUST BE CAPABLE OF WITHSTANDING A PULL-OFF FORCE OF 30 LBS. MIN. AFTER FORMING
(NO.4 成形後可自由轉動且至少需承受 30 LBS. 的拉力)
3. NO.5 MUST WITHSTAND AN AXIAL FORCE OF 6 LBS. AND MAINTAIN THE INTERFACE DIMENSIONS
(NO.5 至少需承受 6 LBS. 的軸向推出力量且保持界面尺寸)

- NOTES: FINISH (PLATING THICKNESS IN MICRO-INCHES)
- BRASS PER QQ-B-626
 - PHOSPHOR BRONZE PER QQ-B-750
 - GOLD PL. 30 MIN. THICK OVER ALBALOY PLATING (COPPER-TIN-ZINC) PL. 80 MIN. THICK
 - ALBALOY PLATING (COPPER-TIN-ZINC) PL. 80 MIN. THICK
 - TEFLON MIL-P-19468

DIMENSIONS ARE IN MILLIMETERS				PART NO.	
UNLESS OTHERWISE SPECIFIED TOLERANCES				APPROVED	DATE
0.5-6 = ±0.2				<i>Angela W</i>	06-16-07'
6-30 = ±0.4				CHECKED	DATE
30-120 = ±0.6				<i>Gissy</i>	06-16-07'
120-315 = ±1				DRAWN	DATE
315-1000 = ±1.6				<i>Korte</i>	06-16-07'
1000-2000 = ±2.4				FILE NO. F:\DWG\CNPD\930\118P\51A-DSZ	

Amphenol	
Danbury, CT, USA - Tainan, Taiwan - Shenzhen, China	
TITLE	QMA 50 OHM R/A PLUG FOR RG-316 TYPE CABLE
DRAWING NO.	930-118P-51A
ITEM NO.	930-118P-51A

NO.	DESCRIPTION	MATERIAL	FINISH	Q'TY	DRAWING NO.
7	FERRULE	COPPER	NOTE 4	1	31-1357-3
6	CAP	NOTE 1	NOTE 4	1	901-6209-2
5	CONTACT PIN	NOTE 1	NOTE 3	1	930-10050
4	SLEEVE	NOTE 1	NOTE 4	1	930-10004
3	OUTER CONTACT	NOTE 2	NOTE 4	1	930-10003#B
2	INSULATOR	NOTE 5	NATURAL	1	930-10010
1	BODY	NOTE 1	NOTE 4	1	930-10051

F
E
D
C
B
A

F
E
D
C
B
A

1 2 3 4 5 6 7 8