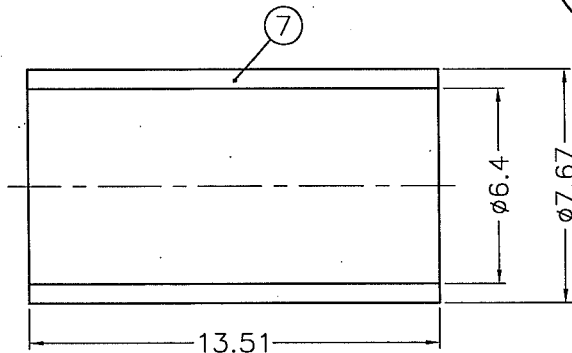
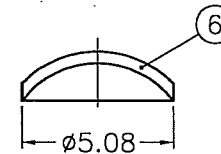
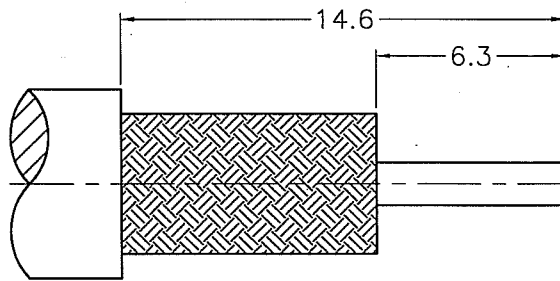
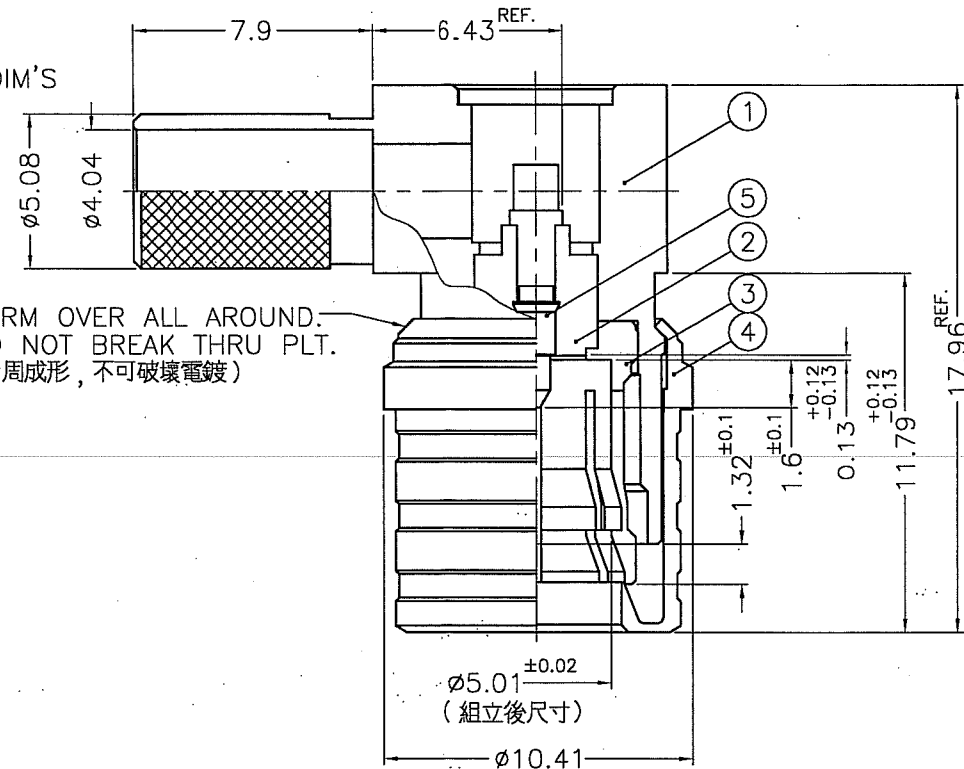


REVISIONS			
ISS	ZONE	DESCRIPTION\PER REQUEST\DATE	
B	A-3	NO.3 WAS CHANGED\RD-DM06072801C\08-14-06'	
C	A-3	NO.4 WAS CHANGED\RD-DM06121501J\12-19-06'	
D	A-3	NO.4 WAS CHANGED\RD-DM07060601K\06-12-07'	



RECOMMENDED  
CABLE STRIPPING DIM'S  
(建議剝線尺寸)



- REMARK: 1. NO.5 IS A PRESS FIT INTO FRONT NO.2 AND MUST MEET INTERFACE DIMENSION AS SHOWN. SLOT SHOULD BE ORIENTED TO SIDE HOLE AS SHOWN  $\pm 3^\circ$   
(NO.5 組入 NO.2 後, 須符合圖面所示尺寸, 且 NO.5 的剖溝與主體側孔中心線平行  $\pm 3^\circ$  以內)
2. NO.4 MUST TURN AND SLIDE WITHOUT BINDING AND MUST BE CAPABLE OF WITHSTANDING A PULL-OFF FORCE OF 30 LBS. MIN. AFTER FORMING  
(NO.4 成形後可自由轉動和移動且至少需承受 30 LBS. 的拉力)
3. NO.5 MUST WITHSTAND AN AXIAL FORCE OF 6 LBS. AND MAINTAIN THE INTERFACE DIMENSIONS  
(NO.5 至少需承受 6 LBS. 的軸向推出力量且保持界面尺寸)

NOTES: FINISH (PLATING THICKNESS IN MICRO-INCHES)

- BRASS PER QQ-B-626
- PHOSPHOR BRONZE PER QQ-B-750
- ALBALOY PLATING (COPPER-TIN-ZINC) PL. 80 MIN. THICK
- GOLD PL. 30 MIN. THICK OVER NICKEL PL. 100 MIN. THICK OVER NICKEL STRIKE
- TEFLON MIL-P-19468

DIMENSIONS ARE IN MILLIMETERS

UNLESS OTHERWISE SPECIFIED TOLERANCES			
0.5-6	=	$\pm 0.2$	
6-30	=	$\pm 0.4$	
30-120	=	$\pm 0.6$	
120-315	=	$\pm 1$	
315-1000	=	$\pm 1.6$	
1000-2000	=	$\pm 2.4$	

PART NO.	
APPROVED	<i>Angela W</i> DATE 06-12-07'
CHECKED	<i>Cissy</i> DATE 06-12-07'
DRAWN	<i>Kate</i> DATE 06-12-07'

<b>Amphenol</b>	
Danbury, CT, USA - Tainan, Taiwan - Shenzhen, China	
TITLE	QMA 50 OHM R/A PLUG
DRAWING NO.	QMA1112A1-AT30GS-LMR240-50
ITEM NO.	701112AAAA1AR5F

NO.	DESCRIPTION	MATERIAL	FINISH	Q'TY	DRAWING NO.
7	FERRULE	COPPER	NOTE 3	1	930-10012
6	CAP	NOTE 1	NOTE 3	1	901-6209-2
5	CONTACT PIN	NOTE 1	NOTE 4	1	930-10013
4	SLEEVE	NOTE 1	NOTE 3	1	930-10004
3	OUTER CONTACT	NOTE 2	NOTE 3	1	930-10003#B
2	INSULATOR	NOTE 5	NATURAL	1	930-10010
1	BODY	NOTE 1	NOTE 3	1	BD70AAB01A

NO.	DESCRIPTION	MATERIAL	FINISH	Q'TY	DRAWING NO.	SCALE	4/1	ISSUE	D	FILE NO. F:\DWG\QMA\1112A1\LMR240-50\AT30GS-DSZ
-----	-------------	----------	--------	------	-------------	-------	-----	-------	---	---