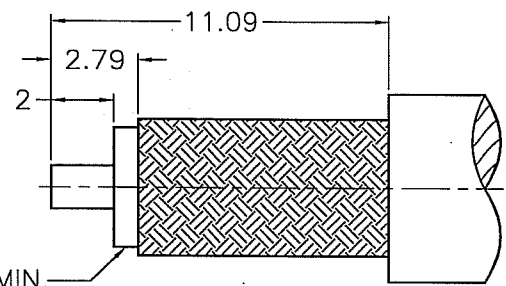
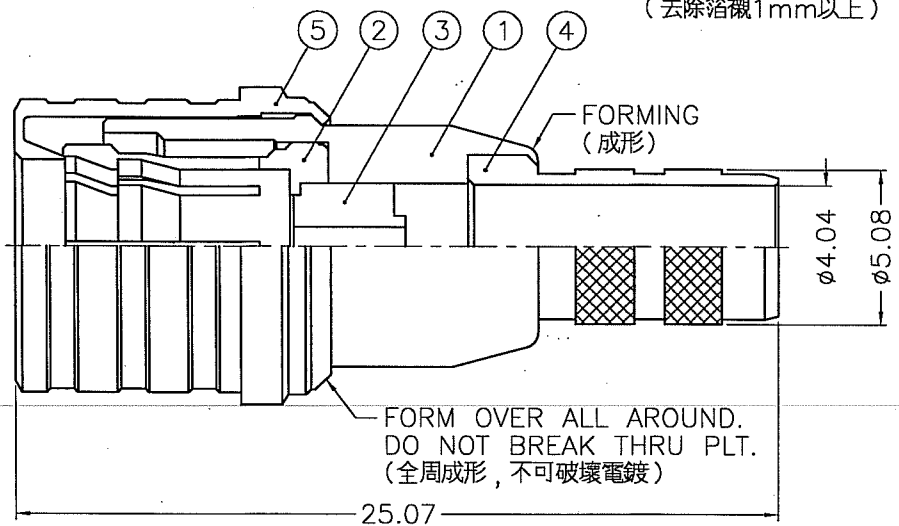
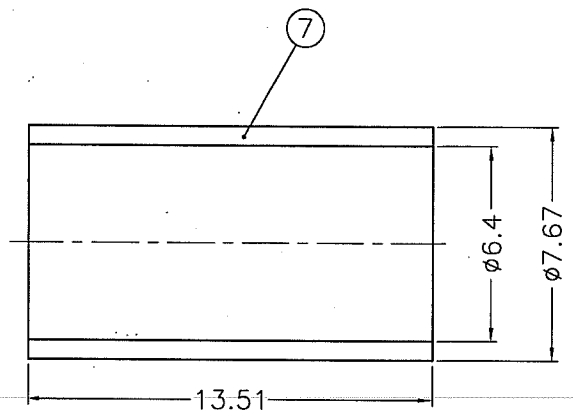
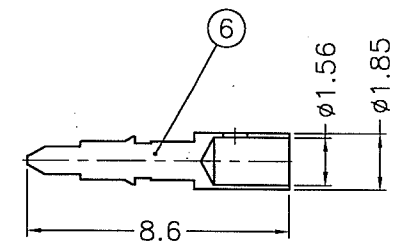


REVISIONS		
ISS	ZONE	DESCRIPTION\PER REQUEST\DATE
B	A-3	NO.2 WAS CHANGED\RD-DM06072801C\08-14-06'
C	A-3	NO.5 WAS CHANGED\RD-DM06121501J\12-19-06'
D	A-3	NO.5 WAS CHANGED\RD-DM07060601K\06-12-07'



RECOMMENDED
CABLE STRIPPING DIM'S
(建議剝線尺寸)

REMOVE FOIL 1mm MIN.
(去除箔襯1mm以上)



FORM OVER ALL AROUND.
DO NOT BREAK THRU PLT.
(全周成形, 不可破壞電鍍)

- 1. CRIMPED FERRULE
HEX CRIMP SIZE .255"
- 2. CONTACT PIN TO SOLDER

NOTES: FINISH (PLATING THICKNESS IN MICRO-INCHES)

1. BRASS PER QQ-B-626
2. PHOSPHOR BRONZE PER QQ-B-750
3. ALBALOY PLATING (COPPER-TIN-ZINC) PL. 80 MIN. THICK
4. GOLD PL. 30 MIN. THICK OVER NICKEL PL. 100 MIN. THICK OVER NICKEL STRIKE
5. TEFLON MIL-P-19468

REMARK: 1. NO.5 MUST TURN AND SLIDE WITHOUT BINDING AND MUST BE CAPABLE OF WITHSTANDING A PULL-OFF FORCE OF 30 LBS. MIN. AFTER FORMING
(NO.5 成形後可自由轉動和移動且至少需承受30 LBS.的拉力)

DIMENSIONS ARE IN MILLIMETERS						PART NO.											
7	FERRULE	COPPER	NOTE 3	1	930-10012	UNLESS OTHERWISE SPECIFIED TOLERANCES 0.5-6 = ±0.2 6-30 = ±0.4 30-120 = ±0.6 120-315 = ±1 315-1000 = ±1.6 1000-2000 = ±2.4				APPROVED	DATE	Amphenol Danbury,CT,USA-Tainan,Taiwan-Shenzhen,China					
6	CONTACT PIN		NOTE 1	NOTE 4	1					CP70AAB01A	ANGELA W				06-12-07'	TITLE	QMA 50 OHM PLUG
5	SLEEVE		NOTE 1	NOTE 3	1					930-10004	CASY				06-12-07'	DRAWING NO.	QMA1121A1-AT30GS-LMR240-50
4	BARREL		NOTE 1	NOTE 3	1					BR00ABP03A	KATE	06-12-07'	ITEM NO.	701121AAAA1AR5F			
3	INSULATOR		NOTE 5	NATURAL	1					NS00AAM03A	FILE NO. F:\DWG\QMA\1121A1\LMR240-50\AT30GS-DSZ						
2	OUT CONTACT		NOTE 2	NOTE 3	1	930-10003#B	SCALE	4/1	ISSUE	D							
1	BODY		NOTE 1	NOTE 3	1	BD70AAC01A											

F
E
D
C
B
A

F
E
D
C
B
A