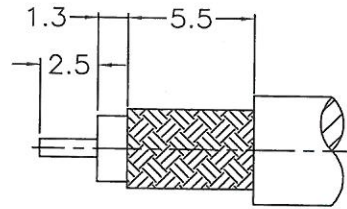
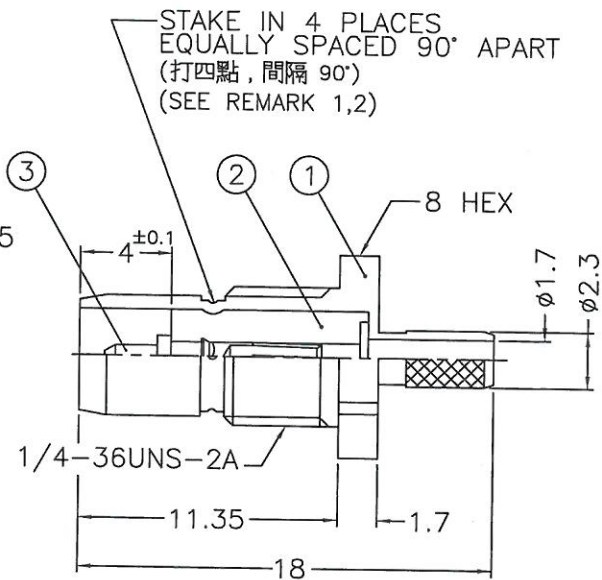
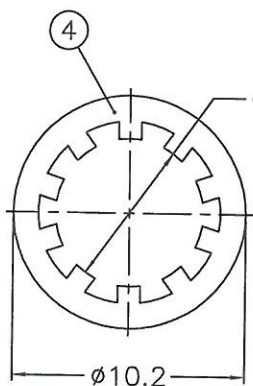
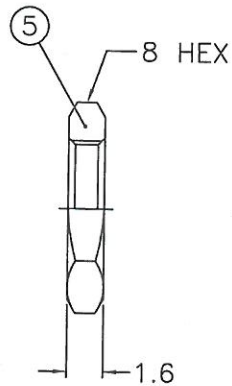
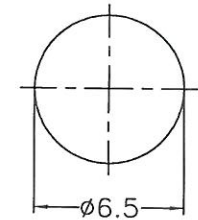


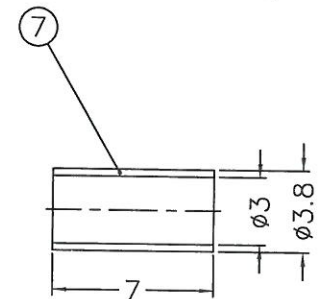
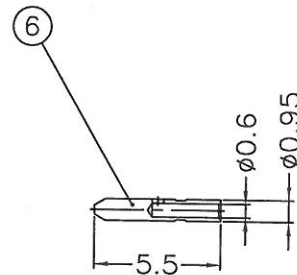
REVISIONS		
ISS	ZONE	DESCRIPTION\PER REQUEST\DATE



RECOMMENDED
CABLE STRIPPING DIM'S
(建議剝線尺寸)



RECOMMENDED
MOUNTING HOLE
(建議架設孔)



1. CRIMPED FERRULE
HEX. CRIMP SIZE .128"
2. CONTACT PIN TO SOLDER

NOTES: FINISH (PLATING THICKNESS IN MICRO-INCHES)

1. BRASS PER QQ-B-626
2. BRASS PER QQ-B-613
3. NICKEL PL. 100 MIN. THICK OVER COPPER STRIKE
4. GOLD PL. 30 MIN. THICK OVER NICKEL PL. 100 MIN. THICK OVER COPPER STRIKE
5. TEFLON MIL-P-19468
6. JIS H 3250, C 2700
7. PHOSPHOR BRONZE PER QQ-B-750

- REMARK: 1. NO.2 MUST WITHSTAND A 6 lbs. MIN. PUSHOUT FORCE FROM NO.1 AFTER STAKING OPERATION
2. REMARK 1 IS MAINTAINED BY STAMPING THE FOUR POINTS SHOWN ON THE DRAWING WITHOUT PUNCTURING NO.1
- (1. 打四點後零件 2 由零件 1 推出至少必須承受 6 磅推力)
 - (2. 打四點後除需符合備註 1 要求外, 且不可擊穿零件 1)

1. MAX. PANEL THICKNESS=2.4mm

DIMENSIONS ARE IN MILLIMETERS						PART NO.		<h2 style="text-align: center;">Amphenol</h2> <p style="text-align: center;">Danbury,CT,USA-Tainan,Taiwan-Shenzhen,China</p>		
UNLESS OTHERWISE SPECIFIED TOLERANCES						APPROVED	DATE			TITLE
0.5-6 = ±0.2							01-18-05'			BMA CRIMP PLUG (FOR RG-316/U)
6-30 = ±0.4										CHECKED
30-120 = ±0.6						JOHN	01-18-05'	DRAWING NO.		
120-315 = ±1								FILE NO.	BMA1111A1-NT30G-316U-50	
315-1000 = ±1.6								ITEM NO.		
1000-2000 = ±2.4								301111AAA36NC5F		
7	FERRULE	NOTE 6	NOTE 3	1	FR-38/3X7C	SCALE	3/1	ISSUE	A	
6	CONTACT PIN	NOTE 1	NOTE 4	1	CPO0AMNO1A					
5	HEX NUT	NOTE 1	NOTE 3	1	HN8-1/4-36X16					
4	LOCK WASHER	NOTE 2	NOTE 3	1	LW-102/65X05					
3	CONTACT PIN	NOTE 7	NOTE 4	1	CP30AAD01-					
2	INSULATOR	NOTE 5	NATURAL	1	NS00ABJ44A					
1	BODY	NOTE 1	NOTE 3	1	BD30AAC01A					