

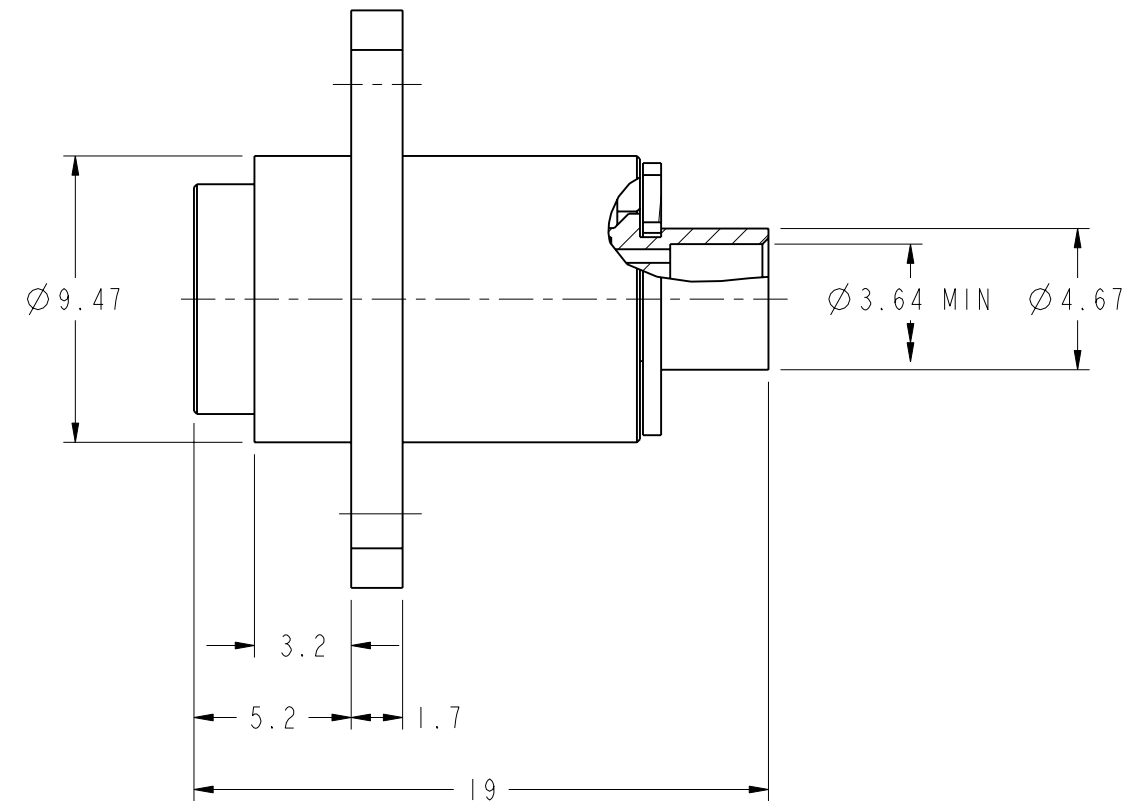
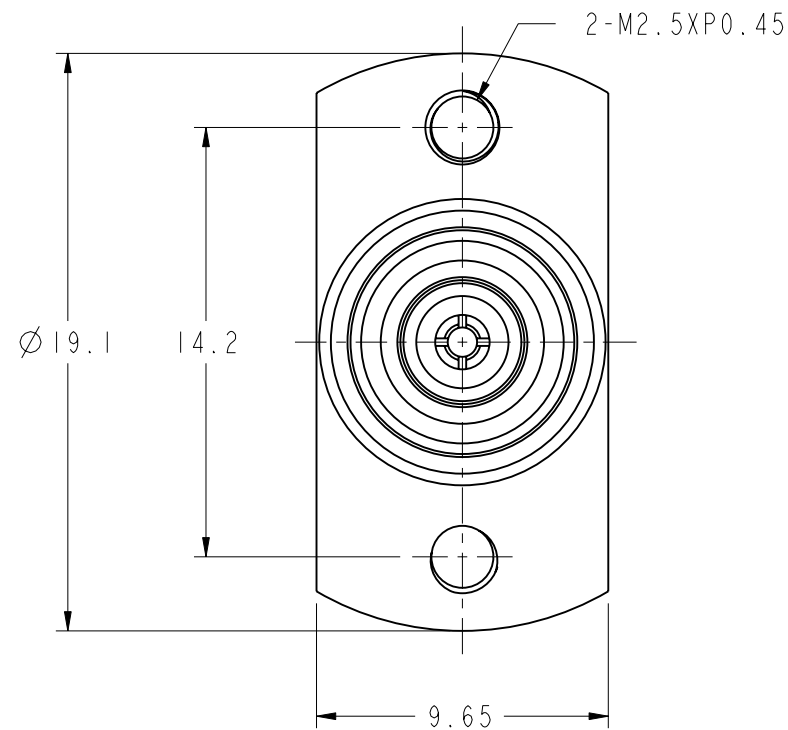
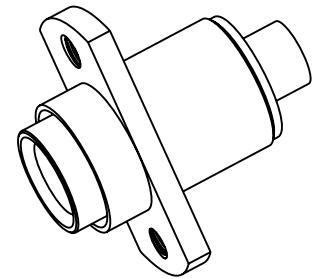
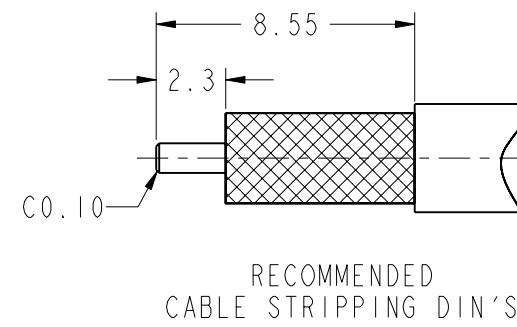
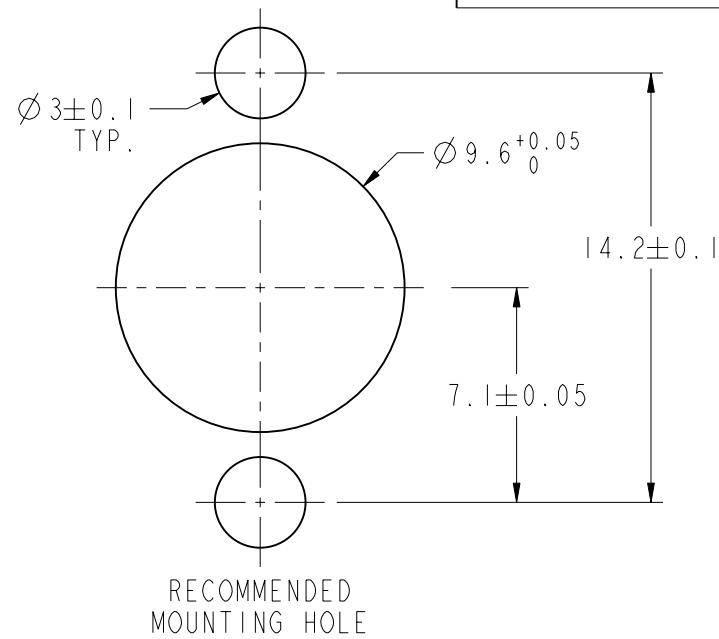
NOTES:

1. MATERIALS AND FINISHES:
  - BODY - BRASS, ALBALOY PLATING
  - CONTACT - PHOSPHOR BRONZE, GOLD PLATING
  - INSULATOR - PTFE, NATURAL
  - SPRING- SWP 80, NICKEL PLATING
2. ELECTRICAL:
  - A. IMPEDANCE: 50 OHM
  - B. FREQUENCY RANGE: DC - 13.5 GHz
  - C. VSWR: 1.20 MAX DC-13.25 GHz  
INSERTION LOSS: 0.7 dB MAX DC-13.25 GHz
  - D. DIELECTRIC WITHSTANDING VOLTAGE: 300 VRMS, MIN.
3. MECHANICAL:
  - A. DURABILITY: 500 CYCLES MIN.
  - B. TEMPERATURE RANGE: -65° C TO +165° C
4. OUT CONTACT TO SOLDER

THIRD ANGLE PROJ.

REVISIONS

REV	DESCRIPTION	DATE	ECO	APPR
A	RELEASE TO MFG.	20-Jan-13		JS
B	SPRING ADDED NICKEL PLATING	02-Apr-14		SCOTT



**CUSTOMER OUTLINE DRAWING**

ALL OTHER SHEETS ARE FOR INTERNAL USE ONLY

UNLESS OTHERWISE SPECIFIED, DIMENSIONS ARE IN METRIC AND TOLERANCES ARE: 0.5 - 6mm ±0.1mm    6 - 30mm ±0.2mm    30 - 120mm ±0.3mm    ANGLES ±1°	MATERIAL	DRAWN K. ZHANG DATE 26-Mar-14	TITLE BMA PANEL JACK (FOR .141 CABLE)			Amphenol RF Danbury CT USA, Tainan, Taiwan, Shenzhen, China www.amphenolrf.com
	NOTICE - These drawings, specifications, or other data (1) are, and remain the property of Amphenol corp. (2) must be returned upon request; and (3) are confidential and not to be disclosed to any person other than those to whom they are given by Amphenol Corp., the furnishing of these drawings, specifications, or other data by Amphenol Corp., or to any other person to anyone for any purpose is not to be regarded by implication or otherwise in any manner licensing, granting rights to permitting such holder or any other sperson to manufacture, use or sell any product, process or design, patented or otherwise, that may in any way be related to or disclosed by said drawings, specifications, or other data.	REFERENCE FOR CAB-12062702-01F	ENGINEER F. WANG DATE 26-Mar-14	APPROVED S. HSIEH DATE 26-Mar-14	SCALE: 4.0:1.0    SHEET 2 OF 2	
FINISH	I:\BMA\BMA6581A2-AT5GP-141-50	DWG SIZE B	CODE ID 74868	REV B	ITEM NO. 306581AAE42CP5F	
					PART NO.	